

TRANSMISSION ASSEMBLY <4WD>

22100350031

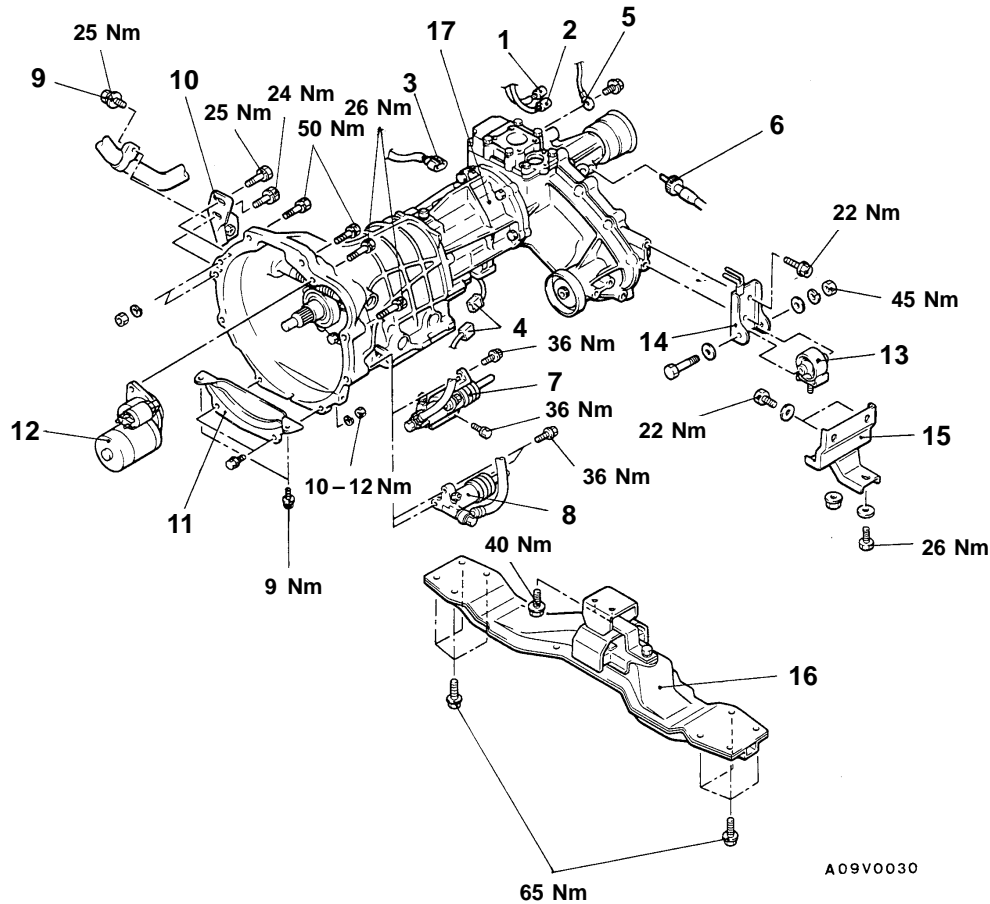
REMOVAL AND INSTALLATION

**Pre-removal Operation**

- (1) Transmission and Transfer Control Lever Removal (Refer to P. 22-8.)
- (2) Transfer Case Protector Removal
- (3) Transmission and Transfer Oil Draining (Refer to P. 22-4.)
- (4) Front and Rear Propeller Shaft Removal (Refer to GROUP 25.)

**Post-installation Operation**

- (1) Front and Rear Propeller Shaft Installation (Refer to GROUP 25.)
- (2) Transmission and Transfer Oil Filling (Refer to P. 22-4.)
- (3) Transfer Case Protector Installation
- (4) Transmission and Transfer Control Lever Installation (Refer to P.22-8)
- (5) Transmission and Transfer Control Lever Operation Check
- (6) Speedometer Operation Check



A09V0030

**Removal steps**

1. HIGH/LOW detection switch connector
2. 4WD detection switch connector
3. Back-up lamp switch connector <4D56>
4. Back-up lamp switch connector <4G64>
5. Earth cable
6. Speedometer cable connection
7. Clutch release cylinder, bracket assembly <4G64>
8. Clutch release cylinder <4D56>



9. Exhaust pipe clamp mounting bolt <4G64>
10. Transmission hanger bracket <4G64>
11. Bell housing cover
12. Starter motor
  - Support the transmission with a transmission jack
13. Transfer roll stopper
14. Transfer mount bracket
15. Transfer support bracket
16. No. 2 cross member
17. Transmission assembly